



34-214C Portable C-Yoke Compression Riveter



- Hard coated cylinder.
- Safety approved throttle lever.
- 90° swiveling air inlet.
- Tool steel roller bearings and shafts.
- Operates with little or no oil.

Toll Free Nationwide & Canada: **800-645-8180**

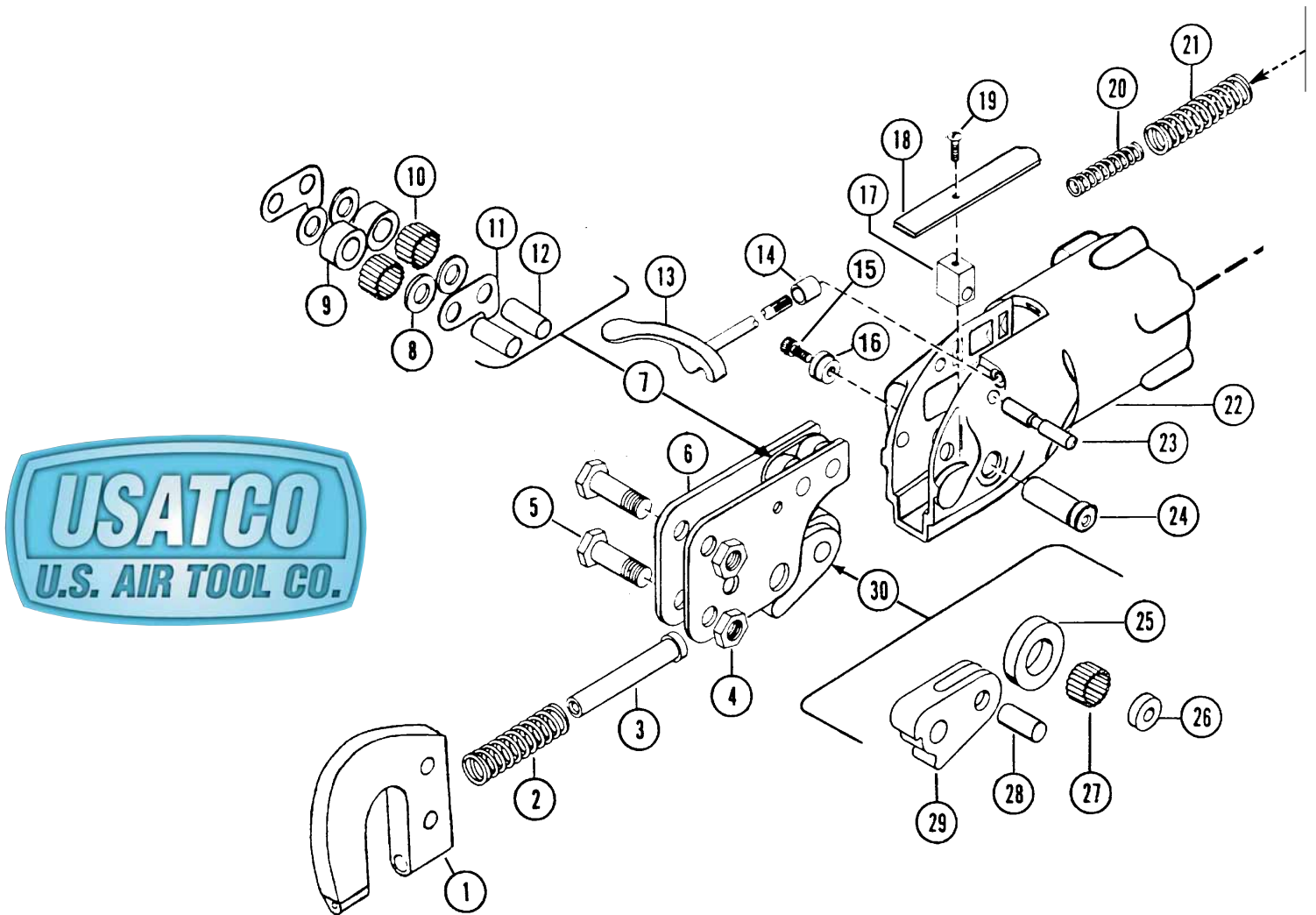
USATCO\U.S. AIR TOOL COMPANY, INC. www.USATCO.com NEW YORK • CALIFORNIA

34-214C Portable C-Yoke Compression Riveter

All parts shown on this list are interchangeable with like items offered by Chicago Pneumatic, Deutsch APT, and several other makes.

| Model No. | Capacity Cold Rivet Diameter (in.) | | Standard Yoke Dimensions (inches) | | | Max Force (pounds) with 90psi Air Pressure | Set Holding Plunger | | Net Weight (pounds) | Overall Length (inches) | Air Inlet Thread Size (inches) | Gap | Set Hole Size |
|-----------|------------------------------------|-------|-----------------------------------|---------------|-------------------|--|-------------------------|--|---------------------|-------------------------|--------------------------------|-----|---------------|
| | Alum. | Steel | Reach | Closed Height | "C" Yoke Part No. | | Maximum Travel (inches) | Part of Stroke at Maximum Force (inches) | | | | | |
| | 34-214C-1-1/2 | 1/8 | 3/32 | 1-1/2 | 11/16 | 538 | 3300 | 9/16 | Final 1/16 | 4-1/2 | 10 | 1/4 | 1-1/4 |

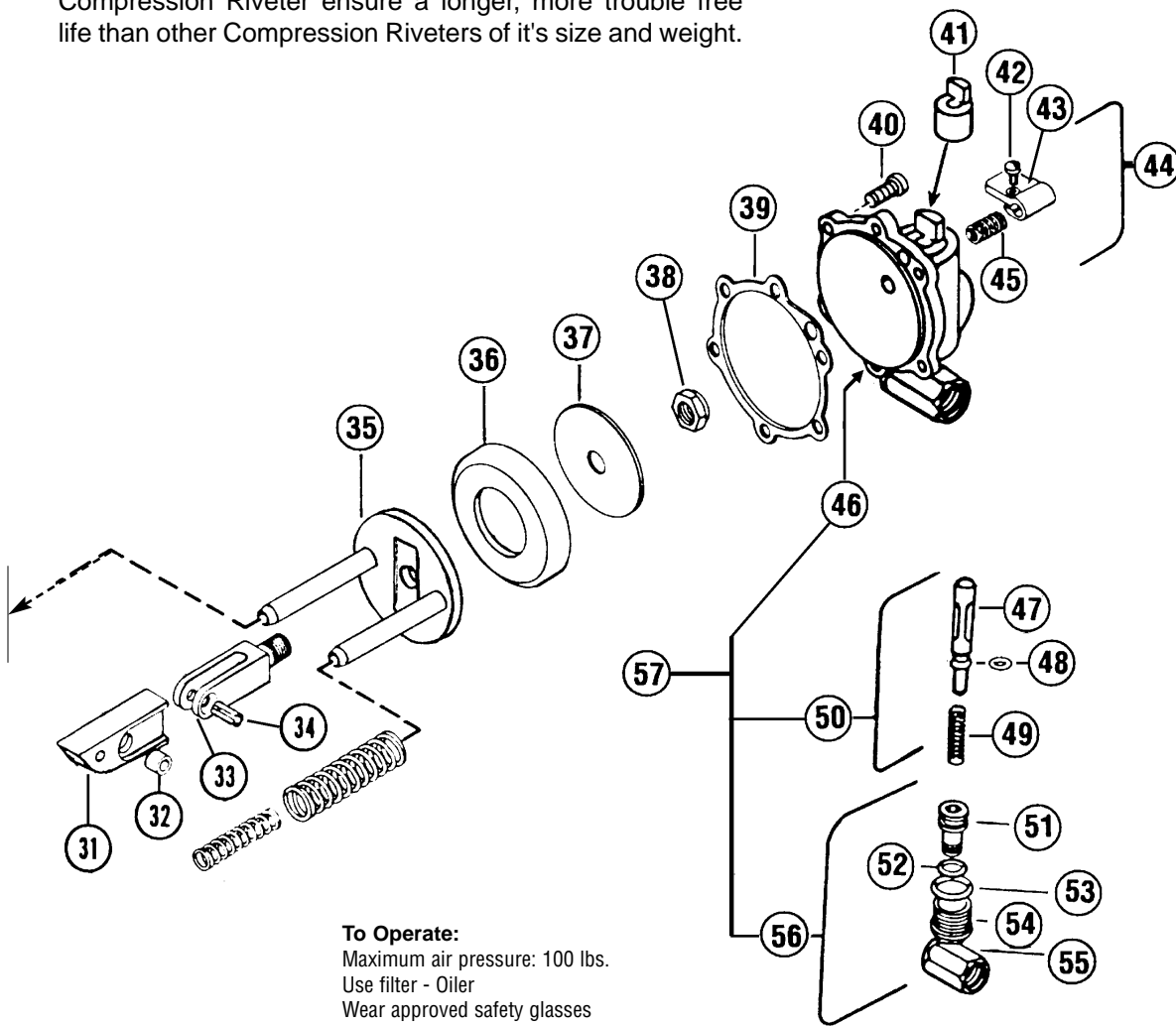
Note: Table above details standard "C" Yoke, suitable for most applications. In addition we have many special C-Yokes for out of the ordinary applications. Submit blueprint or sample of your riveting problems.



USATCO U.S. Air Tool Company, Inc.

Eastern Division60 Fleetwood Ct., Ronkonkoma, NY 11779-6951 tel: (631) 471-3300 fax: (631) 471-3308
 Western Division1219 W. Mahalo Place, Rancho Dominguez, CA 90220-5446 tel: (310) 632-5400 fax: (310) 632-3900

Many new features built into this rugged, well balanced Compression Riveter ensure a longer, more trouble free life than other Compression Riveters of it's size and weight.



To Operate:
 Maximum air pressure: 100 lbs.
 Use filter - Oiler
 Wear approved safety glasses

Rivet Sets Kit



53-26

Virtually all the tooling you will need for your squeezer. Assorted cupped, flush, soft blanks and spacer shims. 31 Pieces, Metal Box included.

Floor Stand

37-12



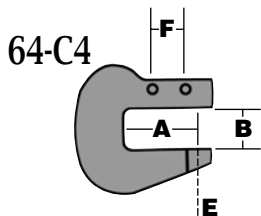
Includes:

- Tool Mount
- Foot Control Assembly
- Connecting Hose

Available with or without tool.

C-Yokes for the 34-214C Rivet Squeezer

| | | | |
|---------|---------------------|----------------------------|----------------------------|
| | 64-C1 | Reach 'A': 1-7/16" | Gap 'B': 1-1/4" |
| | | Set Hole 'E': .187" | Mount Spacing 'F': 1-5/16" |
| | 64-C200 | Reach 'A': 2" | Gap 'B': 1-1/4" |
| | Set Hole 'E': .187" | Mount Spacing 'F': 1-5/16" | |
| 64-C300 | Reach 'A': 3" | Gap 'B': 1-1/4" | |
| | Set Hole 'E': .187" | Mount Spacing 'F': 1-5/16" | |

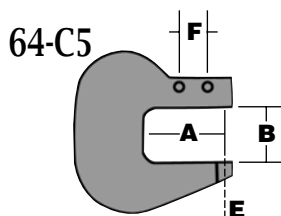


64-C4

Reach 'A': 3-1/2"
 Gap 'B': 1-3/4"

Set Hole 'E': .187"

Mount Spacing 'F': 1-5/16"

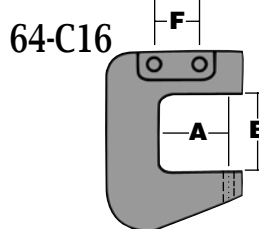


64-C5

Reach 'A': 4-1/8"
 Gap 'B': 2-1/2"

Set Hole 'E': .187"

Mount Spacing 'F': 1-5/16"



64-C16

Reach 'A': 2"
 Gap 'B': 2"

Mount Spacing 'F': 1.312"

With Adj. Threaded Adapter

Bench Mount Riveter

34-720CBR1

Please Inquire



| Index Number | Part Number | Description | Amt. Req. |
|--------------|-------------|---|-----------|
| 1 | 64-C1 | "C" Yoke—Standard (other configurations available) | 1 |
| 2 | 38-540 | Return Spring | 1 |
| 3 | 38-539 | Set Holder Std. 2-9/16" with 3/16" Hole (other lengths avail.) | 1 |
| 4 | 38-541 | Bolt | 2 |
| 5 | 38-494 | Plate | 2 |
| 6 | 38-415 | Nut | 2 |
| 7 | 38-469 | Roller Bearing | 2 |
| 8 | 38-626 | Needle Bearing (2 Sets) | 20 / 20 |
| 9 | 38-472 | Washer | 4 |
| 10 | 38-498 | Guide | 2 |
| 11 | 38-470 | Roller Bearing Shaft | 2 |
| 12 | 38-554 | Roller Bearing Assembly (includes index no. 7,8,9,10,11) | 1 |
| 13 | 38-795 | Throttle Valve Lever | 1 |
| 14 | 38-572 | Spacer | 1 |
| 15 | 38-369 | Screw | 1 |
| 16 | 38-537 | Cap, Shaft | 1 |
| 17 | 38-456 | Screw | 1 |
| 18 | 38-496 | Spacer | 1 |
| 19 | 38-495 | Roller Bearing Guard | 1 |
| 20 | 38-589 | Cylinder | 1 |
| 21 | 38-497 | Pin | 1 |
| 22 | 38-536 | Shaft | 1 |
| 23 | 38-533 | Roller Bearings | 1 |
| 24 | 38-627 | Needle Bearings | 25 |
| 25 | 38-535 | Shaft | 1 |
| 26 | 38-534 | Inner Bearing Roller | 1 |
| 27 | 38-532 | Lever | 1 |
| 28 | 38-553 | Lever Assembly (includes index no. 23, 24, 25, 26, 27) | 1 |
| 29 | 38-467 | Inner Spring | 2 |
| 30 | 38-468 | Outer Spring | 2 |
| 31 | 38-493 | Wedge | 1 |
| 32 | 38-465 | Spacer | 1 |
| 33 | 38-462 | Piston Shaft Fork | 1 |
| 34 | 38-466 | Roll Pin | 1 |
| 35 | 38-438 | Piston | 1 |
| 36 | 38-460 | Cup Leather | 1 |
| 37 | 38-461 | Plate | 1 |
| 38 | 38-463 | Locknut | 1 |
| 39 | 38-483 | Gasket | 1 |
| 40 | 38-410 | Screw | 6 |
| 41 | 38-200 | Spring | 1 |
| 42 | 38-901 | Throttle Lever | 1 |
| 43 | 38-628 | Screw | 1 |
| 44 | 38-944 | Throttle Lever Assembly (includes index no. 42 & 43) | 1 |
| 45 | 38-6298 | Throttle Valve (standard) | 1 |
| 46 | 38-566 | "O" Ring (-008) | 1 |
| 47 | 38-6346 | Valve Assembly (includes index no. 45, 46, 48) | 1 |
| 48 | 38-3577 | Spring | 1 |
| 49 | 38-6309 | Bushing | 1 |
| 50 | 38-940 | Cylinder Head (incl index no. 49) | 1 |
| 51 | 38-1585 | Air Inlet Swivel | 1 |
| 52 | 38-491 | "O" Ring (-012) | 1 |
| 53 | 38-488 | "O" Ring (-014) | 1 |
| 54 | 38-499 | Nut | 1 |
| 55 | 38-522 | Elbow (90° - 1/4 pipe) | 1 |
| 56 | 38-2436 | Air Inlet Swivel Complete (includes index no. 51, 52, 53, 54, 55) | 1 |
| 57 | 38-943 | Cylinder Head Assembly Complete (index no. 47, 50, 56) | 1 |
| 599 | 38-1607 | Cylinder Head, Valveless: Use with foot or hand valve control, usually with floor stand or bench mounting. (not shown) | 1 |



J-P Tools MFG. Co. Div.

USATCO U.S. Air Tool Company, Inc.

60 Fleetwood Court, Ronkonkoma, NY 11779-6951 phone: 631-471-3300 fax: 631-471-3308

Also Located At: Rancho Dominguez, California