

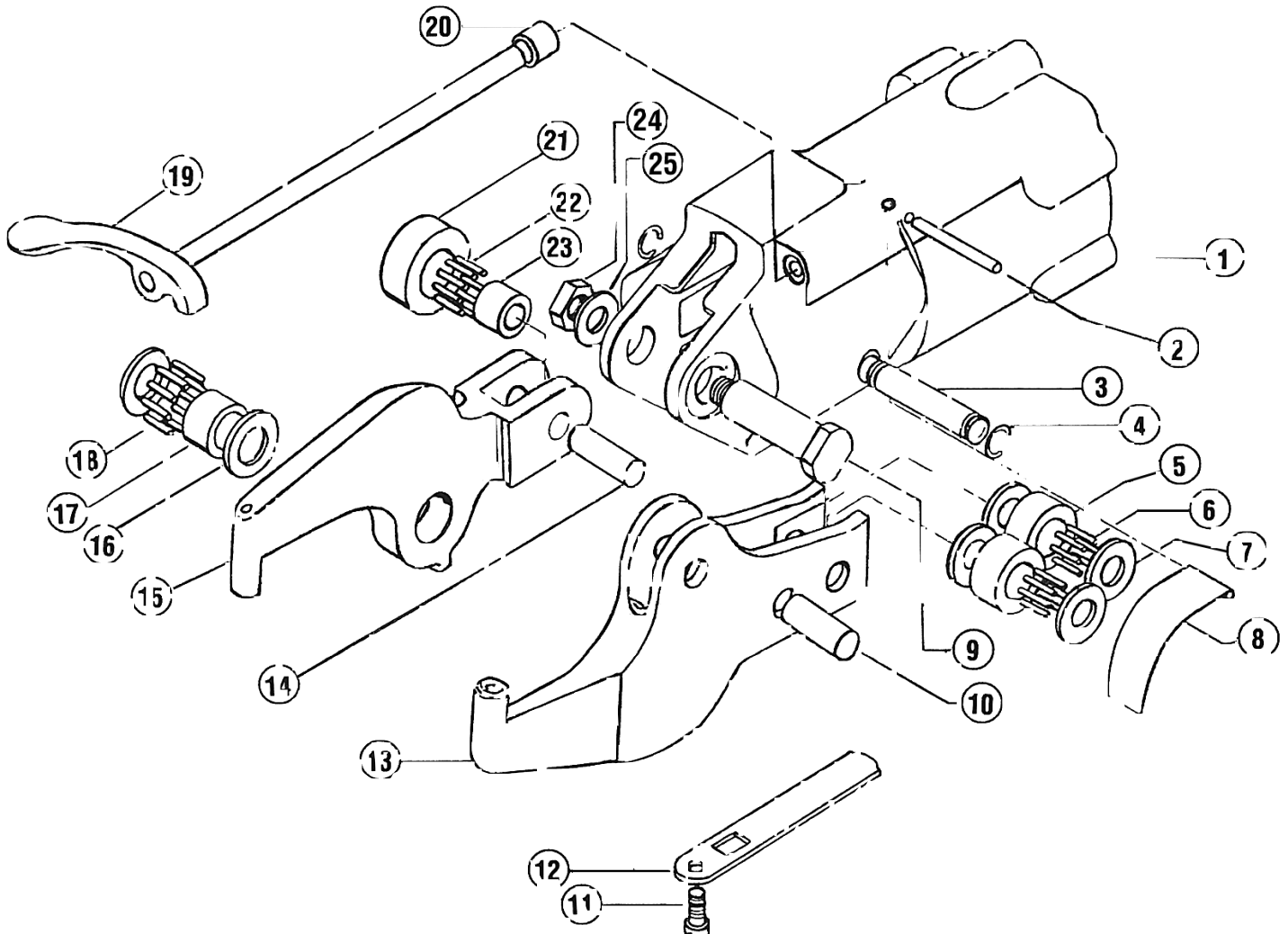
# 34-214A Alligator Jaw Compression Riveter

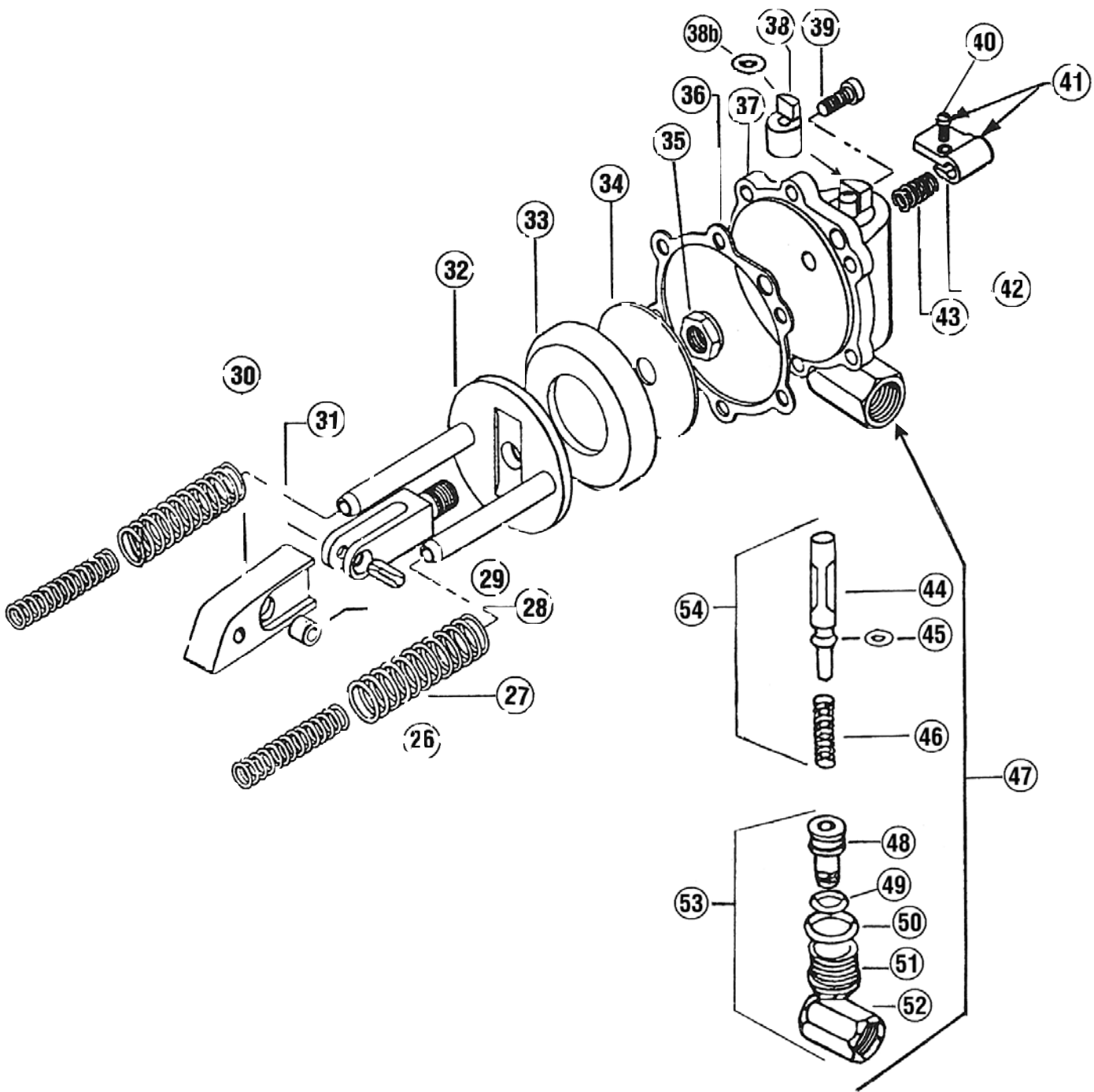
*All parts shown on this list are interchangeable with like items offered by Chicago Pneumatic, Deutsch APT, and several other makes.*

Model Number	Standard Yoke Dimensions		Gap	Moving Jaw		Set Hole Size	Jaw Part No.		Capacity Cold Rivet		Max. Force 90PSI Air Pressure	Net Weight lbs.	O.A. Length	Air Inlet Thd. Size
	Reach	Height		Max. Travel	Stroke At Max. Force		Stationary Jaw	Moving Jaw	Dia. Alum.	Dia. Steel				
32-214A-1-1/2	1-1/2	7/8"	1-5/8"	5/8"	Final 1/16"	3/16"	38-457	38-458	1/8"	3/32"	3,000	3-3/4	9-3/16"	1/4"
32-214A-2-1/4	2-1/4	7/8"	1-3/4"	7/8"	Final 3/32"	3/16"	38-1213	38-1214	1/8"	3/32"	2,200	4-1/4	10-1/8"	1/4"
32-214A-3	3	7/8"	2-1/8"	1-1/4"	Final 1/8"	3/16"	38-1215	38-1216	3/32"	1/16"	1,800	4-1/4	10-1/8"	1/4"

**Note:** Our well equipped tool repair shop can repair or rebuild any currently used rivet squeezer. Let our experience and knowhow save you money and lost time.

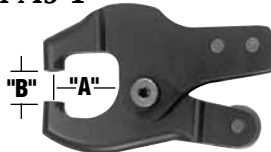
**Free Estimates!**





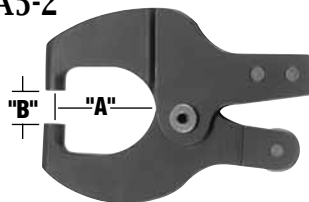
## Alligator Yokes for the 34-214A Rivet Squeezer

64-A5-1



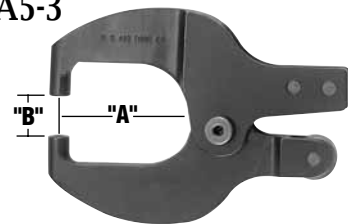
Reach 'A': 1.54"  
Gap 'B': .89"

64-A5-2



Reach 'A': 2.35"  
Gap 'B': .89"

64-A5-3



Reach 'A': 3.125"  
Gap 'B': .89"

USATCO\U.S. Air Tool Company, Inc.

Eastern Division .....60 Fleetwood Ct., Ronkonkoma, NY 11779-6907 tel: (631) 471-3300 fax: (631) 471-3308

Western Division .....1219 W. Mahalo Place, Rancho Dominguez, CA 90220-5446 tel: (310) 632-5400 fax: (310) 632-3900

Index No.	Part No.	Description	Qty.
1	38-588	Cylinder	1
2	38-413	Roll Pin	1
3	38-471	Roller Bearing Shaft	1
4	38-551	Retaining Ring	2
5	38-469	Roller Bearing	2
6	38-626	Needle Bearing (2 Sets)	20 / 20
7	38-472	Washer	4
8	38-455	Return Spring	1
9	38-482	Bolt	1
10	38-470	Roller Bearing Shaft	1
11	38-188	Screw	1
12	38-473	Roller Bearing Guard	1
13		Stationary Alligator Jaw (see chart for sizes)	1
14	38-550	Bearing Shaft	1
15		Moving Alligator Jaw (see chart for sizes)	1
16	38-481	Washer	2
17	38-480	Inner Bearing Roller	1
18	38-626	Needle Bearing	35
19	38-795	Throttle Valve Lever	1
20	38-572	Spacer	1
21	38-478	Outer Bearing Roller	1
22	38-626	Needle Bearing	29
23	38-479	Inner Bearing Roller	1
24	38-184	Hex Nut	1
25	38-177	Washer	1
26	38-467	Inner Spring	2
27	38-468	Outer Spring	2
28	38-465	Spacer	1
29	38-466	Roll Pin	1
30	38-464	Wedge	1
31	38-462	Piston Shaft Fork	1
32	38-438	Piston	1
33	38-460	Cup Leather	1
34	38-461	Plate	1
35	38-463	Locknut	1
36	38-483	Gasket	1
37	38-38B	Cylinder Head (includes index no. 38)	1
38	38-6309	Bushing	1
38b	38-5183	"O" Ring (-010)	1
39	38-410	Screw	6
40	38-628	Screw	1
41	38-944	Throttle Lever Assembly (includes index no. 40 & 42)	1
42	38-901	Throttle Lever	1
43	38-200	Spring	1
44	38-6298	Throttle Valve (standard)	1
45	38-566	"O" Ring (-008)	1
46	38-3577	Spring	1
47	38-943	Cylinder Head Assembly Complete (includes index no. 37, 53 & 54)	1
48	38-1585	Air Inlet Swivel	1
49	38-491	"O" Ring (-012)	1
50	38-488	"O" Ring (-014)	1
51	38-489	Nut	1
52	38-522	Elbow (90° - 1/4" pipe)	1
53	38-2436	Air Inlet Swivel Complete (includes index no. 48, 49, 50, 51 & 52)	1
54	38-6346	Valve Assembly (includes index no. 44, 45 & 46)	1



*J-P Tools MFG. Co. Div.*

**USATCO\U.S. Air Tool Company, Inc.**

60 Fleetwood Court, Ronkonkoma, NY 11779-6907 phone: 631-471-3300 fax: 631-471-3308

Also Located At: Rancho Dominguez, California



## 34-214A Alligator Jaw Compression Riveter

- Good balance, easy handling
- Safety approved throttle lever.
- 90° swiveling air inlet.
- Tool steel roller bearings and shafts.
- Good availability of replacement parts.
- Operates with little or no oil.
- Air Pressure: 90 Psi. (60 Bar)



Model No. **34-21A-1-1/2** Shown

Toll Free Nationwide & Canada: **800-645-8180**

USATCO\U.S. AIR TOOL COMPANY, INC. [www.USATCO.com](http://www.USATCO.com) NEW YORK • CALIFORNIA